



# Riad Villas

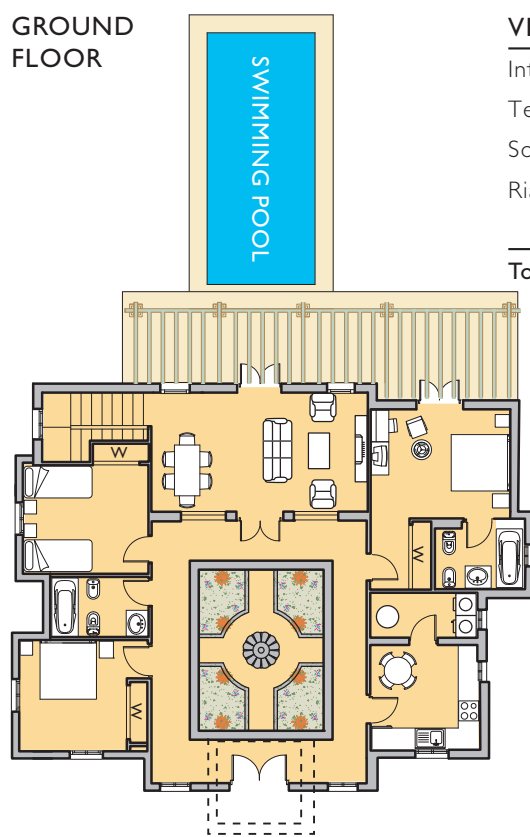
## Type RV1 (4 Bed)

The Fairways floor plan illustrates a typical Type RV1 (4 Bed)



FRONT VIEW

GROUND FLOOR

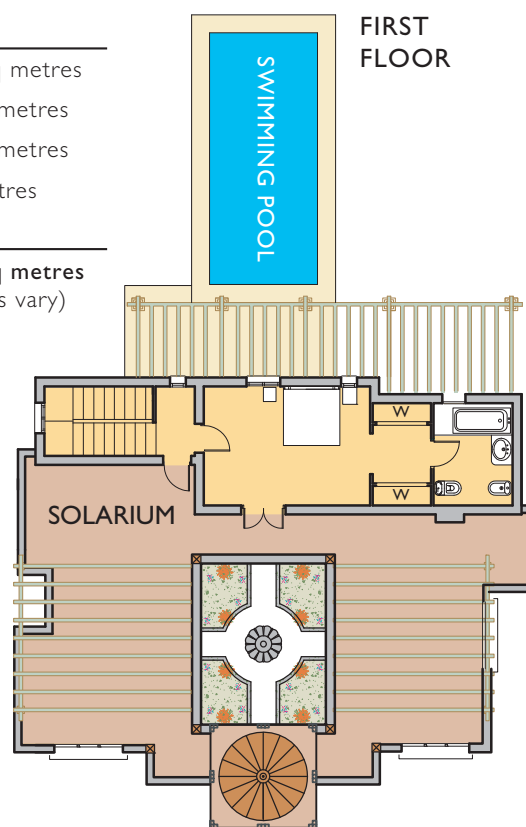


### VILLA DIMENSIONS

Internal Build:	175.30 sq metres
Terraces:	28.04 sq metres
Solarium:	70.95 sq metres
Riad Courtyard:	16 sq metres

**Total Build:** 290.29 sq metres  
(Plot sizes vary)

FIRST FLOOR

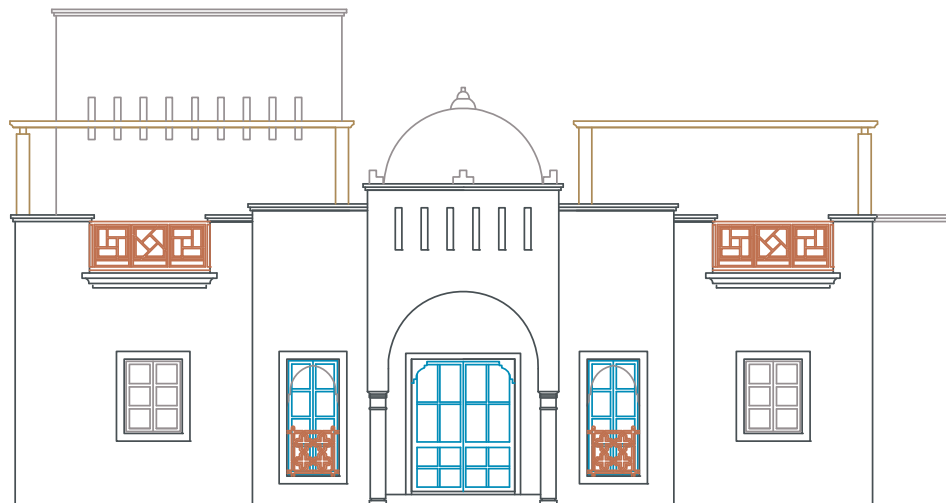




# Riad Villas

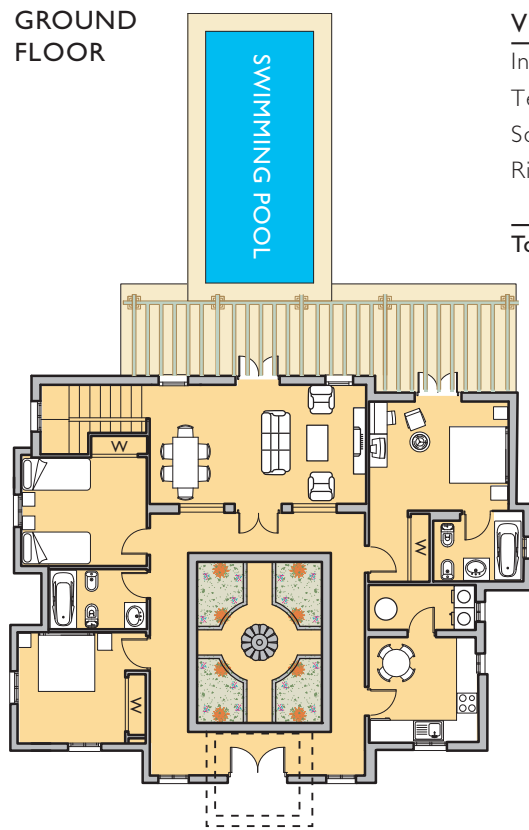
## Type RV2 (3 Bed)

The Fairways floor plan illustrates a typical Type RV2 (3 Bed)



FRONT VIEW

GROUND FLOOR



### VILLA DIMENSIONS

Internal Build:	143.40 sq metres
Terraces:	28.04 sq metres
Solarium:	100.35 sq metres
Riad Courtyard:	16 sq metres

**Total Build:** 287.79 sq metres  
(Plot sizes vary)

FIRST FLOOR

